



2026 Education Handbook

HUNTER

Purpose

The purpose of the 2026 community handbook is to provide club administrators and volunteers the most valuable information for their club in one easy location. Community coach, safety education course lists, Tackle Ready deliverer training & information on the re-accreditation processes. In addition insightful information on where to find support, club tool kits, policies and guidelines to help answer any questions you might receive as a volunteer around the ground.

For any questions regarding the Handbook please contact your local NRL Game Development staff first, if they need clarifying they will contact the Regional Education Delivery Lead:

Name	Mobile	Email
Paddy Haycock (Game Development Officer)	0477 907 652	phaycock@nrl.com.au
Luke Lawrence (Game Development Officer)	0402 892 487	llawrence@nrl.com.au
Kayla Romaniuk (Game Development Officer)	0419 712 160	kromaniuk@nrl.com.au
Dan Swan (Regional Education Delivery Lead)	0408 907 125	dswan@nrl.com.au
Matt Sharman (Regional Manager)	0409 069 785	msharman@nrl.com.au

Online Coaching Modules

A new or returning coach with an expired accreditation must complete a NRL delivered *Community Coach Face to Face Workshop*. This is required to be completed before June 30 to be able to be registered and insured to coach a community Rugby League team in 2026.

They must complete the online modules for the relevant age group they are coaching and then enrol to the desired face to face workshop.

Age Group	Online Modules	Workshop Required?
U6s – U7s	https://learn.mysideline.com.au/coursefinder/detail?courseId=26490	Yes (6-7's Workshop)
U8s – U12s	https://learn.mysideline.com.au/coursefinder/detail?courseId=26491	Yes (8-12's Workshop)
U13s – U15s	https://learn.mysideline.com.au/coursefinder/detail?courseId=26492	Yes (13-18's Workshop)
U16s – U18s	https://learn.mysideline.com.au/coursefinder/detail?courseId=26493	Yes (13-18's Workshop)
19+	https://learn.mysideline.com.au/coursefinder/detail?courseId=26494	No

Head Coaches and **Assistant Coaches** with a current or expired **SCC** or **HPC** not coaching in the designated pathway we strongly encourage to complete the age-appropriate **Community Coach Course** (eg. 19+) as the SCC and HPC accreditations will not be renewed moving forward.

Which Coach is right for my Club?

When appointing coaches to teams it is important to look for the right coach, who will aim to nurture your players development and instill a positive environment that will keep players at your club for an extended period having a positive experience with the game .

Look for Coaches Who:

- Adopt a guiding role and make it all about the player
- Work on having positive relationships with everyone
- Take an active role in shaping a great environment for learning
 - Endeavour to use activities that are fun
 - Make every effort to keep players safe
 - Aspire to improve their coaching

Other things to keep in mind

- They don't need to know EVERYTHING about Rugby League
- Will they coach all players equally or just the more developed players?
- Do they value winning above the development of all players equally?

Will the coach create this environment for your players?



Friendship

Coaches should work on building respectful relationships



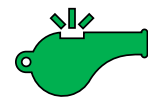
Activity

Players should engage in high amounts of deliberate play



Feedback

This should be related to a player's effort and improvement



Coaching

Low level of coach intervention and high amount of player input



Skills

Focus on fundamental skills and sport specific skills



Sampling

Players should be allowed to engage in a variety of experiences within the game



Mistakes

Players are encouraged to learn from mistakes and not punished



Time

Players need time to develop and build a base before complex skills

Community Coach Workshops

NRL VOLUNTEER- Do you need a course? Follow the steps to become a community

	6-7's Coach's	8-12's Coach's	13-18's Coach's	19's + Coach's
1	E-Learning 6-7's	E-Learning 8-12's	E-Learning 13-15's E-Learning 16-18's	E-Learning 19+
2	<p>(6-7's) Face to Face Workshop</p> <p>Cost- \$20.00 2.5 hours Face to Face Minimum Age- 16</p>	<p>(8-12's) Face to Face Workshop</p> <p>Cost- \$20.00 3.5 hours Face to Face Minimum Age- 16</p>	<p>(13-18's) Face to Face Workshop</p> <p>Cost- \$20.00 3.5 hours Face to Face Minimum Age- 18</p>	<p>Face to Face Workshop- Optional</p> <p>Optional 13-18's Cost- \$20.00 3.5 hours Face to Face Minimum Age- 18</p>

3	<p>Register for your club -</p> <p>Re-accrdition courses -</p>	<p>Register for your club !</p> <p>The courses are based on the current age groups you are coaching and will provide you with that age groups community coach accreditation for a further 4- year period. Coaches can complete multiple age groups if they wish.</p> <p>Note: Those coaches progressing from ages 8-9's to 10's or 13-15's to 16's will require the E-Learning module not the Re-accrdition.</p>
----------	--	---

6-7's Re-accrditation	https://learn.mysideline.com.au/coursefinder/detail?courseId=26693
8-12's Re-accrdition	https://learn.mysideline.com.au/coursefinder/detail?courseId=26694
13-15's Re-accrdition	https://learn.mysideline.com.au/coursefinder/detail?courseId=26695
16-18's Re-accrdition	https://learn.mysideline.com.au/coursefinder/detail?courseId=26696

Community Coach Course Requirement Flowchart



NRL Coaching Pathway - Male

Performance Coach	
INTERNATIONAL	
AMPOL STATE OF ORIGIN	
NRL TELSTRA PREMIERSHIP	ALL STARS
NSW CUP	QLD CUP

Youth Development Coach						
JERSEY FLEGG (U21)			RISE ROOKIE ACADEMY	MAL MENINGA (U19)		
SG BALL (U19)	Laurie Daley (U18)	HIGH SCHOOL RUGBY LEAGUE		HIGH SCHOOL RUGBY LEAGUE	Cyril Connell (U17)	
ASSRL CHAMPIONSHIP (U18)						
HAROLD MATTHEWS (U17)		Andrew Johns (U16)	CHS, CCC & CIS CARNIVALS (U18)	COMBINED AFFILIATED STATES & TERRITORIES (U18)		QLD SECONDARY SCHOOLS (U18)
ASSRL CHAMPIONSHIP (U15)						
NRL CLUB ACADEMIES (U16-U21)			CHS, CCC & CIS CARNIVALS (U15)	NRL NT, NRL VIC, NRL WA (U15)	QLD SECONDARY SCHOOLS (U15)	
			NRL RISE HEAD COACH			

RISE Development Coach	
RISE RUGBY LEAGUE DEVELOPMENT PROGRAM (U13-U15)	

NRL Coaching Pathway - Female

Performance Coach	
INTERNATIONAL	
AMPOL STATE OF ORIGIN	
NRL TELSTRA WOMEN'S PREMIERSHIP	ALL STARS

Youth Development Coach						
NSW WOMEN'S PREMIERSHIP			RISE ROOKIE ACADEMY	BMD PREMIERSHIP		
TARSHA GALE (U19)				HARVEY NORMAN (U19)		
LISA FIAOLA (U17)	COUNTRY CHAMPS (OPEN)	HIGH SCHOOL RUGBY LEAGUE	HIGH SCHOOL RUGBY LEAGUE	Harvey Norman (U17)		
		ASSRL CHAMPIONSHIP (U18)				
	REGIONAL LISA FIAOLA (U17)	CHS, CCC & CIS CARNIVALS (U18)	COMBINED AFFILIATED STATES & TERRITORIES (U18)		QLD SECONDARY SCHOOLS (U18)	
		ASSRL CHAMPIONSHIP (U15)				
NRL CLUB ACADEMIES (U16-U21)			CHS, CCC & CIS CARNIVALS (U15)	NRL NT, NRL VIC, NRL WA (U15)	QLD SECONDARY SCHOOLS (U15)	
			NRL CLUB ACADEMIES (U16-U21)			

RISE Development Coach	
RISE RUGBY LEAGUE DEVELOPMENT PROGRAM (U13-U16)	

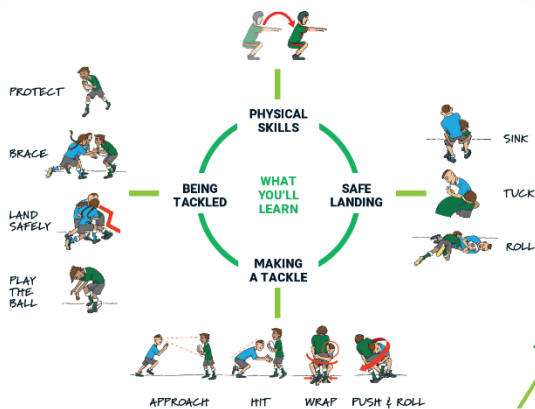
Community Coach	
COMMUNITY RUGBY LEAGUE (U6-OPEN)	

Player Development Programs

Tackle Ready Deliverer- **Become a Tackle Ready Deliverer for your Club**

WHY TACKLEREADY?

- 1** Strong focus on fundamental movement skills
- 2** Ensures the best possible introduction for this complex skill
- 3** A comprehensive education for new coaches
- 4** Reinforces the positive message of safety and player welfare
- 5** Utilises tried and tested activities and coaching practices
- 6** Staged approach to introducing complex skills
- 7** Increases player confidence and physical competence



A two-year program that lays the foundations for a lifelong involvement in Rugby League.



TACKLE READY

Under 6-7's

Tag Rugby League



TACKLE READY

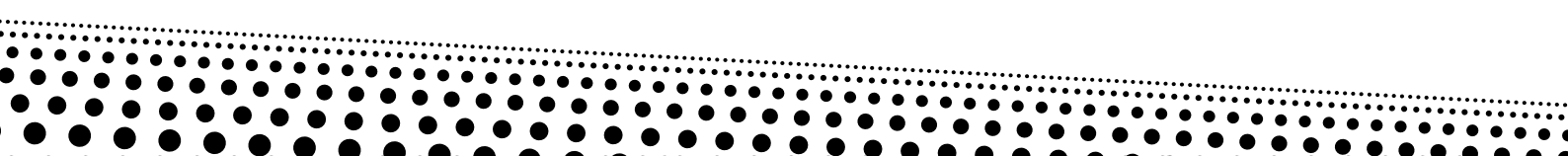
Under 8-12's

Development Competitions



Under 13-15's

RISE Player / Coach Development



Safety Education

We're excited to announce that the new Level 1 Sports Trainer course will be released on 1 November 2025. The course has been redesigned following extensive consultation with internal and external stakeholders.

With a focus on improving education quality and effectiveness, this course will reduce the face-to-face training time from 1.5 days to 1 day to better respect the time of our valued volunteers.

What does this mean for Sports Trainers?

The process to become accredited as a Level 1 Sports Trainer will change slightly. Participants must complete all four steps below:

- **Complete the NRL online learning modules** (Required before registering for a workshop. This does not provide accreditation)
- **Register for a face-to-face workshop** (Only available after completing the online modules)
- **Complete CPR and First Aid online learning modules** (Accessed via the participant's course room after registering for a workshop)
- **Attend a face-to-face workshop**

Participants are not accredited until all four steps are completed

How will this benefit Sports Trainers?

- Improves the quality and consistency of training
- Reduces overall time commitment for volunteers
- Supports a more streamlined course structure across League First Aid, Level 1 Sports Trainer, and Recognition of Prior Learning
- Enhances the online learning experience
- Reduces in-person CPR and First Aid training from six hours to three hours

With the reduction in face-to-face training time, we are pleased to offer lower course registration fees for community volunteers:

- Level 1 Sports Trainer - \$160
- Level 1 Sports Trainer RPL- \$90
- League First Aid - \$80
- League First Aid RPL - \$30
- Re-Accreditation - \$60
- CPR - \$40

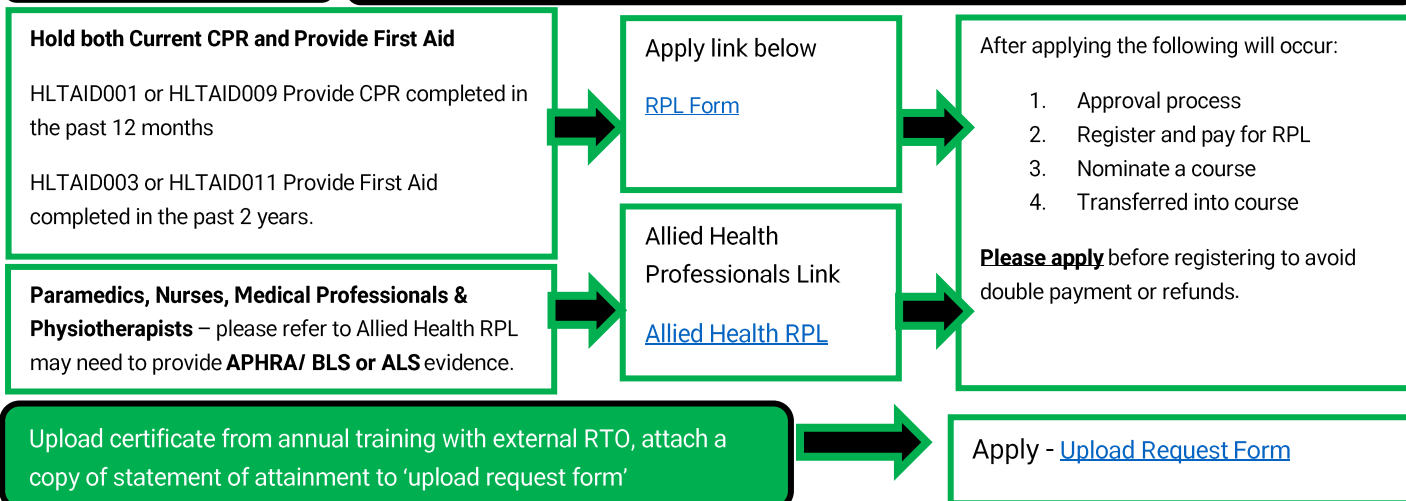
Safety Education

League Safe	League First Aid	Level 1 Trainer	Level 2 Trainer
Under 6's +	Under 6's-15's	Under 6's +	
<p>Online course</p> <p>Cost = Free League Safe certificate Includes Patrons of the Game</p> <p>2026 League Safe</p>	<p>Up to 2 hours eLearning 6 hours Face to Face</p> <p>Cost = \$80.00 League First Aid HLTAID003- Provide First Aid HLTAID001 -Provide CPR Re-accreditation – every 3 years</p> <p>2026 League First Aid Online Learning</p>	<p>Up to 3 hours eLearning 8 hours Face to Face</p> <p>Cost = \$160.00 NRL Level 1 Sports Trainer HLTAID003 Provide First Aid HLTAID001 Provide CPR Re-accreditation – every 3 years</p> <p>2026 Level 1 Sports Trainer Online Learning</p>	<p>Up to 2 hours eLearning 16 hours Face to Face</p> <p>Cost = \$350.00 NRL Level 2 Sports Trainer Re-accreditation – every 3 years (Note- Not a requirement for JRL)</p> <p>Level 2 Sports Trainer</p>

Re-accreditation Process (If your accreditation has expired you **CANNOT** act in the role)



RPL - Process (RPL) is available to all candidates and will be assessed on a case-by case basis.



Community Coach Workshops

6-7's Community Coach Workshops		
Sunday 15 th March	Glendale	Complete
Monday 20 th April	Dudley	Course Full
Sunday 3 rd May	Kurri Kurri	Complete
Tuesday 26 th May	Toronto	Register
Thursday 4 th June	Salamander	Register
Sunday 14 th June	Cessnock	Register
8-12's Community Coach Workshops		
Sunday 15 th March	Glendale	Complete
Thursday 19 th March	Thornton	Complete
Wednesday 15 th April	Cessnock (Day Course)	Complete
Sunday 3 rd May	Kurri Kurri	Complete
Sunday 24 th May	Salamander	Register
Monday 22 nd June	Toronto	Course Full
13-18's Community Coach Workshops		
Sunday 15 th March	Glendale	Complete
Wednesday 15 th April	Thornton (Day Course)	Complete
Monday 4 th May	Dudley	Complete
Sunday 24 th May	Salamander	Register
Sunday 14 th June	Cessnock	Register
Monday 15 th June	Toronto	Register
Extra Community Coach Workshops (if required)		
	To be confirmed	
Coach Coordinator Workshop		
Sunday 15 th March	Glendale	Complete

Sports Trainer Course List

Please note multiple courses in the one location will be uploaded onto the NRL Learning Centre after the previous course is full, this is to ensure courses are put on by demand in the area. Please continue to look as the courses will be uploaded after the previous course is full- [Level 1 Sports Trainer](#)

Location	Day's	Dates	Venue	Registration Link
Glendale	Sunday	22 nd February	Hunter Sports Centre	COMPLETE
Glendale	Saturday	7 th March	Hunter Sports Centre	COMPLETE
Glendale	Saturday	14 th March	Hunter Sports Centre	COMPLETE
Glendale	Saturday	11 th April	Hunter Sports Centre	COMPLETE
Glendale	Tuesday/ Wednesday	28 th & 29 th April	Hunter Sports Centre	COMPLETE
Glendale	Tuesday/ Wednesday	19 th & 20 th May	Hunter Sports Centre	COURSE FULL
Greta	Sunday	31 st May	Greta Workers Club	REGISTER
Glendale	Tuesday/ Wednesday	2 nd & 3 rd June	Hunter Sports Centre	REGISTER

Referee Accreditation

This is to be completed annually to keep your accreditation up to date for the current season. Accreditations in the referee space expire on June 30 the following season.

Re-accreditation	6-12 Community	13-15 Community	16's + Community
Re-accreditation	(6-12) eLearning	(13-15 Years) eLearning	(16+ Years) eLearning

Referee Face to Face Workshops

Day/Date	Location	Register
Sunday 15 th March	Wallsend	COMPLETE
Sunday 17 th May	Wallsend	COMPLETE

Community Tools

Club Rugby League Direct access to everything you need in club land (policies, tools & roles)	NSWRL Policies Policies & Procedures Manuals
Submit a request - Contact Do you need help? Click on our helpful support links to either submit a request or find step by step guides on 'How to'. Play Rugby League Support- How to	National Code of Conduct National Code of Conduct PDF version
Course Catalogue Need to register for a course, find a location near you	CODE OF CONDUCT INCIDENT REPORT FORM Need to report a Code of Conduct issue
Club Rugby League Tool Kit An arrangement of marketing resources for your club to utilise (Social media, videos, flyers etc)	Head Recognition & Referral Form A Level 1 or 2 Sports Trainer to fill in if they have recognised a player displaying and signs or symptoms of concussion
Get involved in Rugby League Be a volunteer we need YOU ! Play your part and assist at your local club.	Playing in higher age consent form Must be completed and submitted to the appropriate administrators
NRL Safety Education Club guide NRL's On-Field Policy, courses requirements, club guides. NRL On-Field Policy	NSW Community Club Ground Manager Induction Get a head start on your role as GM with the induction course, Including scenarios, training, tips, and education of the platforms you have access to.
Coaching Resources Find coaching activity videos, handbooks, warm-up ideas	Apply for a Working with Children Check Service NSW All volunteers including coaches, managers and trainers that are involved with children under the age of 18 are required to comply with the NSWRL policy around Working With Children.
Laws & Policies Find the laws of the game, Safe Play code, code of conduct & policies	Critical Incident management NSWRL Critical incident management plan.
NRL Policies See our large range of policies & guidelines the NRL has to ensure we have a safe and fun environment.	Concussion - Management and Return to Play Info (Recognise, respond to suspected players & what happens next if a player has been diagnosed with a concussion)