



**2026 Education Handbook**

**HUNTER**

## Purpose

The purpose of the 2026 community handbook is to provide club administrators and volunteers the most valuable information for their club in one easy location. Community coach, safety education course lists, Tackle Ready deliverer training & information on the re-accreditation processes. In addition insightful information on where to find support, club tool kits, policies and guidelines to help answer any questions you might receive as a volunteer around the ground.

For any questions regarding the Handbook please contact your local NRL Game Development staff first, if they need clarifying they will contact the Regional Education Delivery Lead:

Name	Mobile	Email
<b>Paddy Haycock</b> (Game Development Officer)	0477 907 652	<a href="mailto:phaycock@nrl.com.au">phaycock@nrl.com.au</a>
<b>Luke Lawrence</b> (Game Development Officer)	0402 892 487	<a href="mailto:llawrence@nrl.com.au">llawrence@nrl.com.au</a>
<b>Kayla Romaniuk</b> (Game Development Officer)	0419 712 160	<a href="mailto:kromaniuk@nrl.com.au">kromaniuk@nrl.com.au</a>
<b>Dan Swan</b> (Regional Education Delivery Lead)	0408 907 125	<a href="mailto:dswan@nrl.com.au">dswan@nrl.com.au</a>
<b>Matt Sharman</b> (Regional Manager)	0409 069 785	<a href="mailto:msharman@nrl.com.au">msharman@nrl.com.au</a>

## Online Coaching Modules

A new or returning coach with an expired accreditation must complete a NRL delivered *Community Coach Face to Face Workshop*. This is required to be completed before June 30 to be able to be registered and insured to coach a community Rugby League team in 2026.

They must complete the online modules for the relevant age group they are coaching and then enrol to the desired face to face workshop.

Age Group	Online Modules	Workshop Required?
U6s – U7s	<a href="https://learn.mysideline.com.au/coursefinder/detail?courseId=26490">https://learn.mysideline.com.au/coursefinder/detail?courseId=26490</a>	Yes (6-7's Workshop)
U8s – U12s	<a href="https://learn.mysideline.com.au/coursefinder/detail?courseId=26491">https://learn.mysideline.com.au/coursefinder/detail?courseId=26491</a>	Yes (8-12's Workshop)
U13s – U15s	<a href="https://learn.mysideline.com.au/coursefinder/detail?courseId=26492">https://learn.mysideline.com.au/coursefinder/detail?courseId=26492</a>	Yes (13-18's Workshop)
U16s – U18s	<a href="https://learn.mysideline.com.au/coursefinder/detail?courseId=26493">https://learn.mysideline.com.au/coursefinder/detail?courseId=26493</a>	Yes (13-18's Workshop)
19+	<a href="https://learn.mysideline.com.au/coursefinder/detail?courseId=26494">https://learn.mysideline.com.au/coursefinder/detail?courseId=26494</a>	No

**Head Coaches** and **Assistant Coaches** with a current or expired **SCC** or **HPC** not coaching in the designated pathway we strongly encourage to complete the age-appropriate **Community Coach Course** (eg. 19+) as the SCC and HPC accreditations will not be renewed moving forward.

## Which Coach is right for my Club?

When appointing coaches to teams it is important to look for the right coach, who will aim to nurture your players development and instill a positive environment that will keep players at your club for an extended period having a positive experience with the game .

### Look for Coaches Who:

- Adopt a guiding role and make it all about the player
- Work on having positive relationships with everyone
- Take an active role in shaping a great environment for learning
  - Endeavour to use activities that are fun
  - Make every effort to keep players safe
  - Aspire to improve their coaching

### Other things to keep in mind

- They don't need to know EVERYTHING about Rugby League
- Will they coach all players equally or just the more developed players?
- Do they value winning above the development of all players equally?

## Will the coach create this environment for your players?



### Friendship

Coaches should work on building respectful relationships



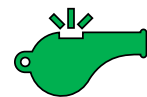
### Activity

Players should engage in high amounts of deliberate play



### Feedback

This should be related to a player's effort and improvement



### Coaching

Low level of coach intervention and high amount of player input



### Skills

Focus on fundamental skills and sport specific skills



### Sampling

Players should be allowed to engage in a variety of experiences within the game



### Mistakes

Players are encouraged to learn from mistakes and not punished



### Time

Players need time to develop and build a base before complex skills

# Community Coach Workshops

**NRL VOLUNTEER-** Do you need a course? Follow the steps to become a community

	6-7's Coach's	8-12's Coach's	13-18's Coach's	19's + Coach's
<b>1</b>	<a href="#">E-Learning 6-7's</a>	<a href="#">E-Learning 8-12's</a>	<a href="#">E-Learning 13-15's</a> <a href="#">E-Learning 16-18's</a>	<a href="#">E-Learning 19+</a>
<b>2</b>	<p><b>(6-7's) Face to Face Workshop</b></p> <p>Cost- <b>\$20.00</b> 2.5 hours Face to Face Minimum Age- 16</p>	<p><b>(8-12's) Face to Face Workshop</b></p> <p>Cost- <b>\$20.00</b> 3.5 hours Face to Face Minimum Age- 16</p>	<p><b>(13-18's) Face to Face Workshop</b></p> <p>Cost- <b>\$20.00</b> 3.5 hours Face to Face Minimum Age- 18</p>	<p><b>Face to Face Workshop- Optional</b></p> <p><b>Optional 13-18's</b> Cost- <b>\$20.00</b> 3.5 hours Face to Face Minimum Age- 18</p>

<b>3</b>	<a href="#">Register for your club -</a>	<a href="#">Register for your club !</a>
	<a href="#">Re-accreditation courses -</a>	<p>The courses are based on the current age groups you are coaching and will provide you with that age groups community coach accreditation for a further 4- year period. Coaches can complete multiple age groups if they wish.</p> <p><b>Note: Those coaches progressing from ages 8-9's to 10's or 13-15's to 16's will require the E-Learning module not the Re-accreditation.</b></p>

6-7's Re-accrditation	<a href="https://learn.mysideline.com.au/coursefinder/detail?courseId=26693">https://learn.mysideline.com.au/coursefinder/detail?courseId=26693</a>
8-12's Re-accreditation	<a href="https://learn.mysideline.com.au/coursefinder/detail?courseId=26694">https://learn.mysideline.com.au/coursefinder/detail?courseId=26694</a>
13-15's Re-accreditation	<a href="https://learn.mysideline.com.au/coursefinder/detail?courseId=26695">https://learn.mysideline.com.au/coursefinder/detail?courseId=26695</a>
16-18's Re-accreditation	<a href="https://learn.mysideline.com.au/coursefinder/detail?courseId=26696">https://learn.mysideline.com.au/coursefinder/detail?courseId=26696</a>

# Community Coach Course Requirement Flowchart



# NRL Coaching Pathway - Male

Performance Coach	
INTERNATIONAL	
AMPOL STATE OF ORIGIN	
NRL TELSTRA PREMIERSHIP	ALL STARS
NSW CUP	QLD CUP

Youth Development Coach						
JERSEY FLEGG (U21)			RISE ROOKIE ACADEMY	MAL MENINGA (U19)		
SG BALL (U19)	Laurie Daley (U18)	HIGH SCHOOL RUGBY LEAGUE		HIGH SCHOOL RUGBY LEAGUE	Cyril Connell (U17)	
ASSRL CHAMPIONSHIP (U18)						
HAROLD MATTHEWS (U17)		Andrew Johns (U16)	CHS, CCC & CIS CARNIVALS (U18)	COMBINED AFFILIATED STATES & TERRITORIES (U18)		QLD SECONDARY SCHOOLS (U18)
ASSRL CHAMPIONSHIP (U15)						
NRL CLUB ACADEMIES (U16-U21)			CHS, CCC & CIS CARNIVALS (U15)	NRL NT, NRL VIC, NRL WA (U15)	QLD SECONDARY SCHOOLS (U15)	
			NRL RISE HEAD COACH			

RISE Development Coach	
RISE RUGBY LEAGUE DEVELOPMENT PROGRAM (U13-U15)	

# NRL Coaching Pathway - Female

Performance Coach	
INTERNATIONAL	
AMPOL STATE OF ORIGIN	
NRL TELSTRA WOMEN'S PREMIERSHIP	ALL STARS

Youth Development Coach					
NSW WOMEN'S PREMIERSHIP			RISE ROOKIE ACADEMY	BMD PREMIERSHIP	
TARSHA GALE (U19)				HARVEY NORMAN (U19)	
LISA FIAOLA (U17)	COUNTRY CHAMPS (OPEN)	HIGH SCHOOL RUGBY LEAGUE	HIGH SCHOOL RUGBY LEAGUE	Harvey Norman (U17)	
		ASSRL CHAMPIONSHIP (U18)			
	REGIONAL LISA FIAOLA (U17)	CHS, CCC & CIS CARNIVALS (U18)	COMBINED AFFILIATED STATES & TERRITORIES (U18)		QLD SECONDARY SCHOOLS (U18)
		ASSRL CHAMPIONSHIP (U15)			
NRL CLUB ACADEMIES (U16-U21)			CHS, CCC & CIS CARNIVALS (U15)	NRL NT, NRL VIC, NRL WA (U15)	QLD SECONDARY SCHOOLS (U15)
			NRL CLUB ACADEMIES (U16-U21)		

RISE Development Coach	
RISE RUGBY LEAGUE DEVELOPMENT PROGRAM (U13-U16)	

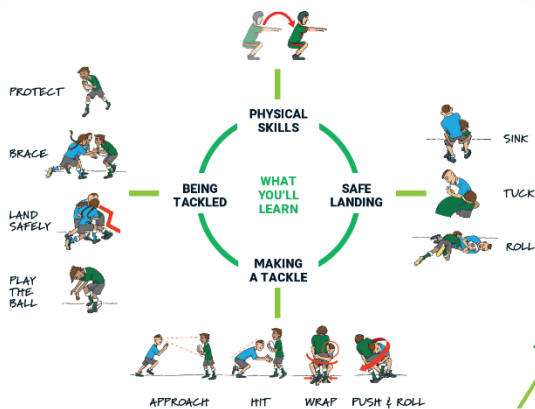
Community Coach	
COMMUNITY RUGBY LEAGUE (U6-OPEN)	

# Player Development Programs

Tackle Ready Deliverer- **Become a Tackle Ready Deliverer for your Club**

## WHY TACKLEREADY?

- 1** Strong focus on fundamental movement skills
- 2** Ensures the best possible introduction for this complex skill
- 3** A comprehensive education for new coaches
- 4** Reinforces the positive message of safety and player welfare
- 5** Utilises tried and tested activities and coaching practices
- 6** Staged approach to introducing complex skills
- 7** Increases player confidence and physical competence



A two-year program that lays the foundations for a lifelong involvement in Rugby League.



**TACKLE READY**

**Under 6-7's**

Tag Rugby League



**TACKLE READY**

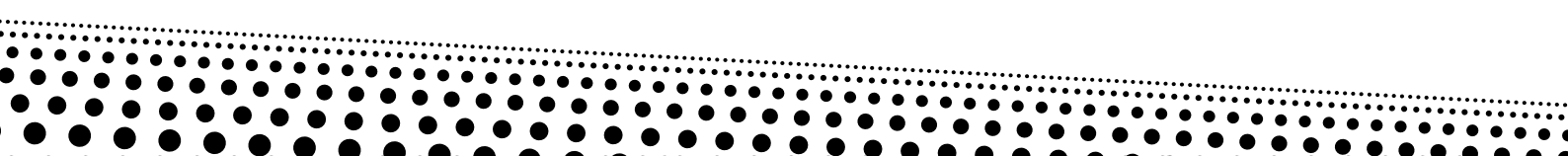
**Under 8-12's**

Development Competitions



**Under 13-15's**

RISE Player / Coach Development



# Safety Education

We're excited to announce that the new Level 1 Sports Trainer course will be released on 1 November 2025. The course has been redesigned following extensive consultation with internal and external stakeholders.

With a focus on improving education quality and effectiveness, this course will reduce the face-to-face training time from 1.5 days to 1 day to better respect the time of our valued volunteers.

## What does this mean for Sports Trainers?

The process to become accredited as a Level 1 Sports Trainer will change slightly. Participants must complete all four steps below:

- **Complete the NRL online learning modules** (Required before registering for a workshop. This does not provide accreditation)
- **Register for a face-to-face workshop** (Only available after completing the online modules)
- **Complete CPR and First Aid online learning modules** (Accessed via the participant's course room after registering for a workshop)
- **Attend a face-to-face workshop**

**Participants are not accredited until all four steps are completed**

## How will this benefit Sports Trainers?

- Improves the quality and consistency of training
- Reduces overall time commitment for volunteers
- Supports a more streamlined course structure across League First Aid, Level 1 Sports Trainer, and Recognition of Prior Learning
- Enhances the online learning experience
- Reduces in-person CPR and First Aid training from six hours to three hours

With the reduction in face-to-face training time, we are pleased to offer lower course registration fees for community volunteers:

- Level 1 Sports Trainer - \$160
- Level 1 Sports Trainer RPL- \$90
- League First Aid - \$80
- League First Aid RPL - \$30
- Re-Accreditation - \$60
- CPR - \$40

# Safety Education

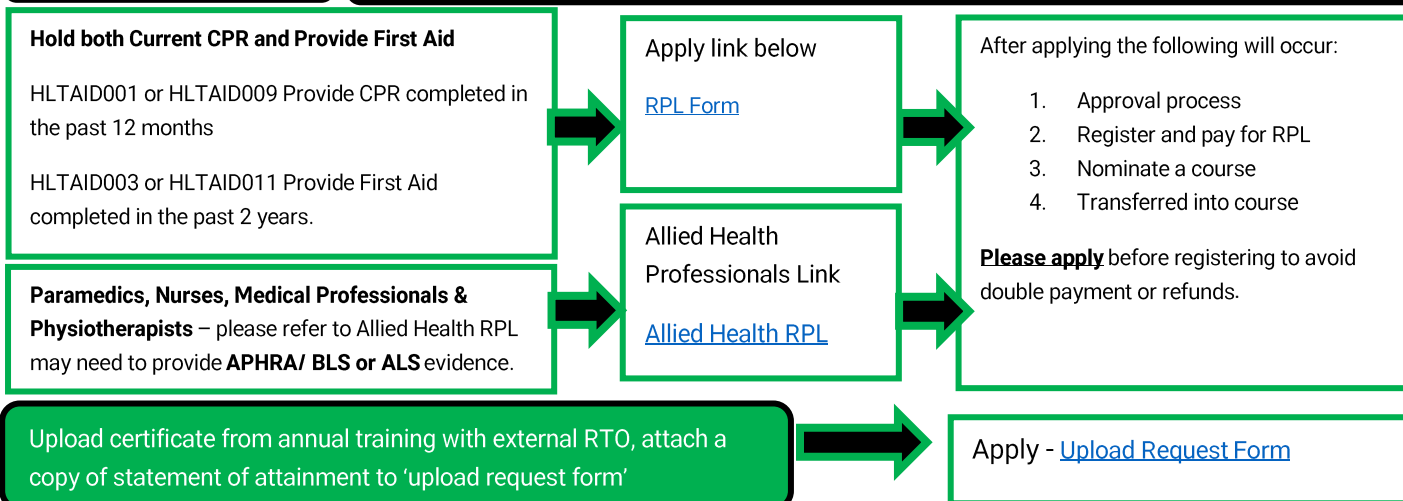
League Safe	League First Aid	Level 1 Trainer	Level 2 Trainer
Under 6's +	Under 6's-15's	Under 6's +	
<p>Online course</p> <p>Cost = <b>Free</b> League Safe certificate Includes Patrons of the Game</p> <p><a href="#">2026 League Safe</a></p>	<p>Up to 2 hours eLearning 6 hours Face to Face</p> <p>Cost = <b>\$80.00</b> League First Aid HLTAID003- Provide First Aid HLTAID001 -Provide CPR Re-accreditation – every 3 years</p> <p><a href="#">2026 League First Aid Online Learning</a></p>	<p>Up to 3 hours eLearning 8 hours Face to Face</p> <p>Cost = <b>\$160.00</b> NRL Level 1 Sports Trainer HLTAID003 Provide First Aid HLTAID001 Provide CPR Re-accreditation – every 3 years</p> <p><a href="#">2026 Level 1 Sports Trainer Online Learning</a></p>	<p>Up to 2 hours eLearning 16 hours Face to Face</p> <p>Cost = <b>\$350.00</b> NRL Level 2 Sports Trainer Re-accreditation – every 3 years <b>(Note- Not a requirement for JRL)</b></p> <p><a href="#">Level 2 Sports Trainer</a></p>

## Re-accreditation Process (If your accreditation has expired you **CANNOT** act in the role)



## RPL - Process

(RPL) is available to all candidates and will be assessed on a case-by case basis.



## Community Coach Workshops

6-7's Community Coach Workshops		
Sunday 15 <sup>th</sup> March	Glendale	Complete
Monday 20 <sup>th</sup> April	Dudley	Course Full
Sunday 3 <sup>rd</sup> May	Kurri Kurri	<a href="#">Register</a>
Wednesday 20 <sup>th</sup> May	Toronto	<a href="#">Register</a>
Thursday 4 <sup>th</sup> June	Salamander	Coming Soon
Sunday 14 <sup>th</sup> June	Cessnock	<a href="#">Register</a>
8-12's Community Coach Workshops		
Sunday 15 <sup>th</sup> March	Glendale	Complete
Thursday 19 <sup>th</sup> March	Thornton	Complete
Wednesday 15 <sup>th</sup> April	Cessnock (Day Course)	Complete
Sunday 3 <sup>rd</sup> May	Kurri Kurri	<a href="#">Register</a>
Sunday 24 <sup>th</sup> May	Salamander	<a href="#">Register</a>
Monday 22 <sup>nd</sup> June	Toronto	<a href="#">Register</a>
13-18's Community Coach Workshops		
Sunday 15 <sup>th</sup> March	Glendale	Complete
Wednesday 15 <sup>th</sup> April	Thornton (Day Course)	Complete
Monday 4 <sup>th</sup> May	Dudley	<a href="#">Register</a>
Sunday 24 <sup>th</sup> May	Salamander	<a href="#">Register</a>
Sunday 14 <sup>th</sup> June	Cessnock	<a href="#">Register</a>
Monday 15 <sup>th</sup> June	Toronto	<a href="#">Register</a>
Extra Community Coach Workshops (if required)		
	To be confirmed	
Coach Coordinator Workshop		
Sunday 15 <sup>th</sup> March	Glendale	Complete

# Sports Trainer Course List

Please note multiple courses in the one location will be uploaded onto the NRL Learning Centre after the previous course is full, this is to ensure courses are put on by demand in the area. Please continue to look as the courses will be uploaded after the previous course is full- [Level 1 Sports Trainer](#)

Location	Day's	Dates	Venue	Registration Link
Glendale	Sunday	22 <sup>nd</sup> February	Hunter Sports Centre	COMPLETE
Glendale	Saturday	7 <sup>th</sup> March	Hunter Sports Centre	COMPLETE
Glendale	Saturday	14 <sup>th</sup> March	Hunter Sports Centre	COMPLETE
Glendale	Saturday	11 <sup>th</sup> April	Hunter Sports Centre	COMPLETE
Glendale	Tuesday/ Wednesday	28 <sup>th</sup> / 29 <sup>th</sup> April	Hunter Sports Centre	COURSE FULL
Glendale	Tuesday/ Wednesday	19 <sup>th</sup> / 20 <sup>th</sup> May	Hunter Sports Centre	<a href="#">REGISTER</a>
Glendale	Tuesday/ Wednesday	2 <sup>nd</sup> /3 <sup>rd</sup> June	Hunter Sports Centre	COMING SOON

## Referee Accreditation

This is to be completed annually to keep your accreditation up to date for the current season. Accreditations in the referee space expire on June 30 the following season.

<a href="#">Re-accreditation</a>	<a href="#">6-12 Community</a>	<a href="#">13-15 Community</a>	<a href="#">16's + Community</a>
<a href="#">Re-accreditation</a>	<a href="#">(6-12) eLearning</a>	<a href="#">(13-15 Years) eLearning</a>	<a href="#">(16+ Years) eLearning</a>

### Referee Face to Face Workshops

Day/Date	Location	Register
Sunday 15 <sup>th</sup> March	Wallsend	COMPLETE

## Community Tools-

<a href="#">Club Rugby League</a> Direct access to everything you need in club land (policies, tools & roles)	<a href="#">NSWRL Policies</a> Policies & Procedures Manuals
<a href="#">Submit a request - Contact</a> Do you need help? Click on our helpful support links to either submit a request or find step by step guides on 'How to'.  <a href="#">Play Rugby League Support- How to</a>	<a href="#">National Code of Conduct</a> National Code of Conduct PDF version
<a href="#">Course Catalogue</a> Need to register for a course, find a location near you	<a href="#">CODE OF CONDUCT INCIDENT REPORT FORM</a> Need to report a Code of Conduct issue
<a href="#">Club Rugby League Tool Kit</a> An arrangement of marketing resources for your club to utilise (Social media, videos, flyers etc)	<a href="#">Head Recognition &amp; Referral Form</a> A Level 1 or 2 Sports Trainer to fill in if they have recognised a player displaying and signs or symptoms of concussion
<a href="#">Get involved in Rugby League</a> <b>Be a volunteer we need YOU !</b> Play your part and assist at your local club.	<a href="#">Playing in higher age consent form</a> Must be completed and submitted to the appropriate administrators
<a href="#">NRL Safety Education Club guide</a> NRL's On-Field Policy, courses requirements, club guides.  <a href="#">NRL On-Field Policy</a>	<a href="#">NSW Community Club Ground Manager Induction</a> Get a head start on your role as GM with the induction course, Including scenarios, training, tips, and education of the platforms you have access to.
<a href="#">Coaching Resources</a> Find coaching activity videos, handbooks, warm-up ideas	<a href="#">Apply for a Working with Children Check   Service NSW</a> All volunteers including coaches, managers and trainers that are involved with children under the age of 18 are required to comply with the NSWRL policy around Working With Children.
<a href="#">Laws &amp; Policies</a> Find the laws of the game, Safe Play code, code of conduct & policies	<a href="#">Critical Incident management</a> NSWRL Critical incident management plan.
<a href="#">NRL Policies</a> See our large range of policies & guidelines the NRL has to ensure we have a safe and fun environment.	<a href="#">Concussion - Management and Return to Play Info</a> (Recognise, respond to suspected players & what happens next if a player has been diagnosed with a concussion)